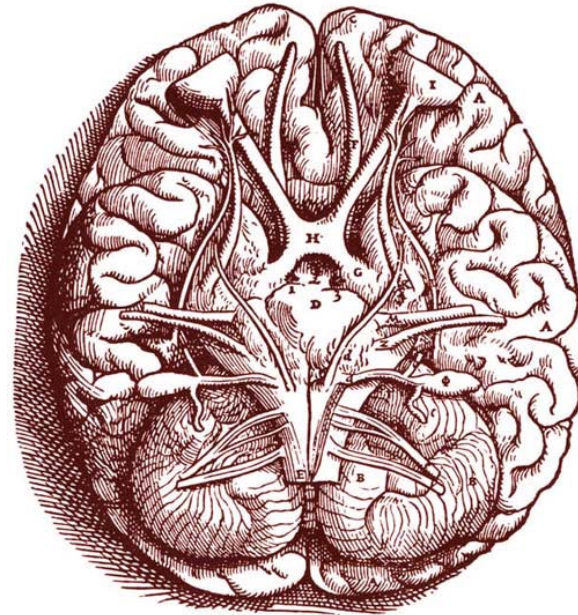


G18: Cranial Nerves



GL18:

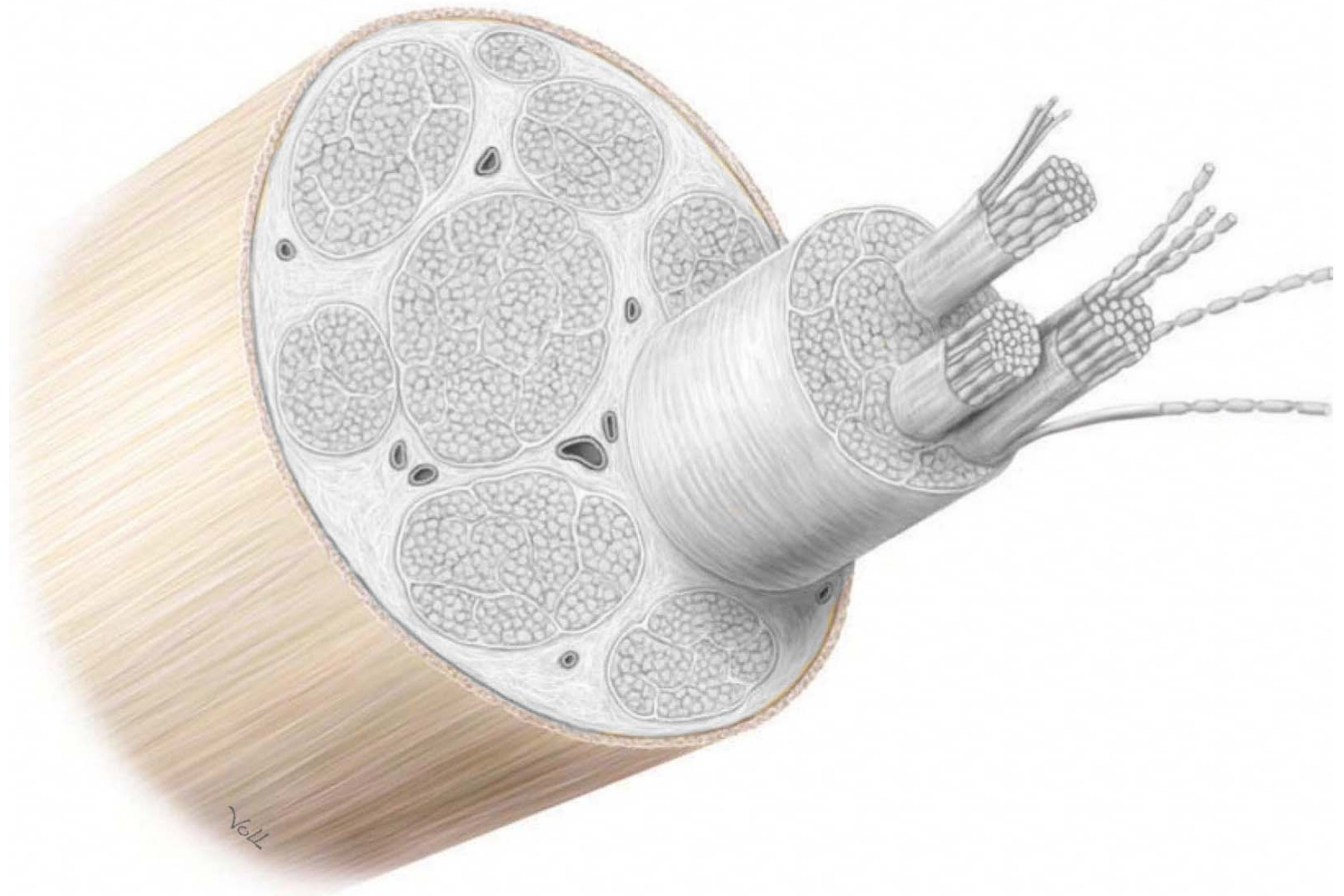
A - Brain and Base of Skull (Cadaver)

B - Clinical Apps (HSEB 2120)

1) Intro to CN Modalities

- Neuron vs. Nerve

Epineurium

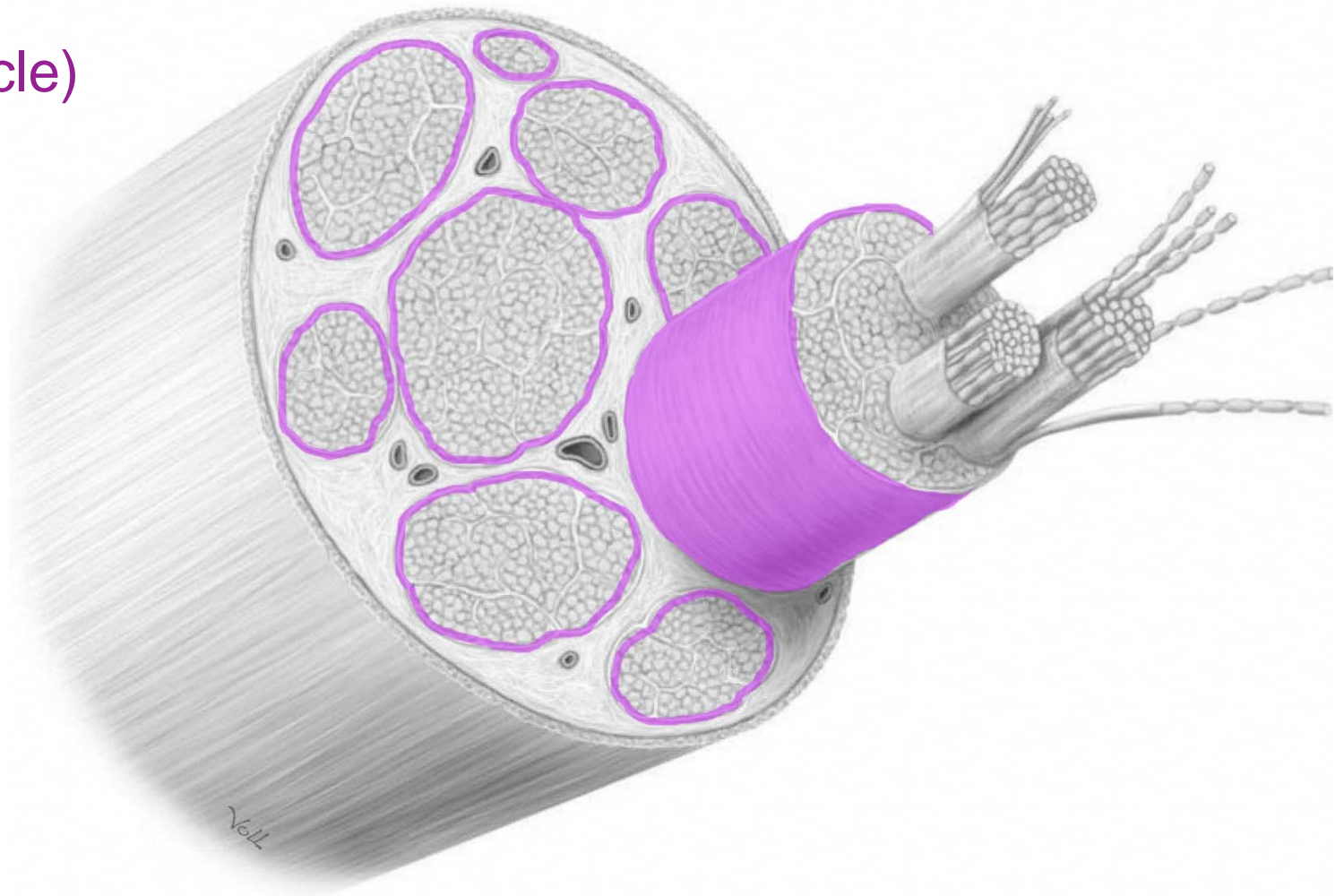


Pgs 31-32

1) Intro to CN Modalities

- Neuron vs. Nerve

Perineurium
(fascicle)

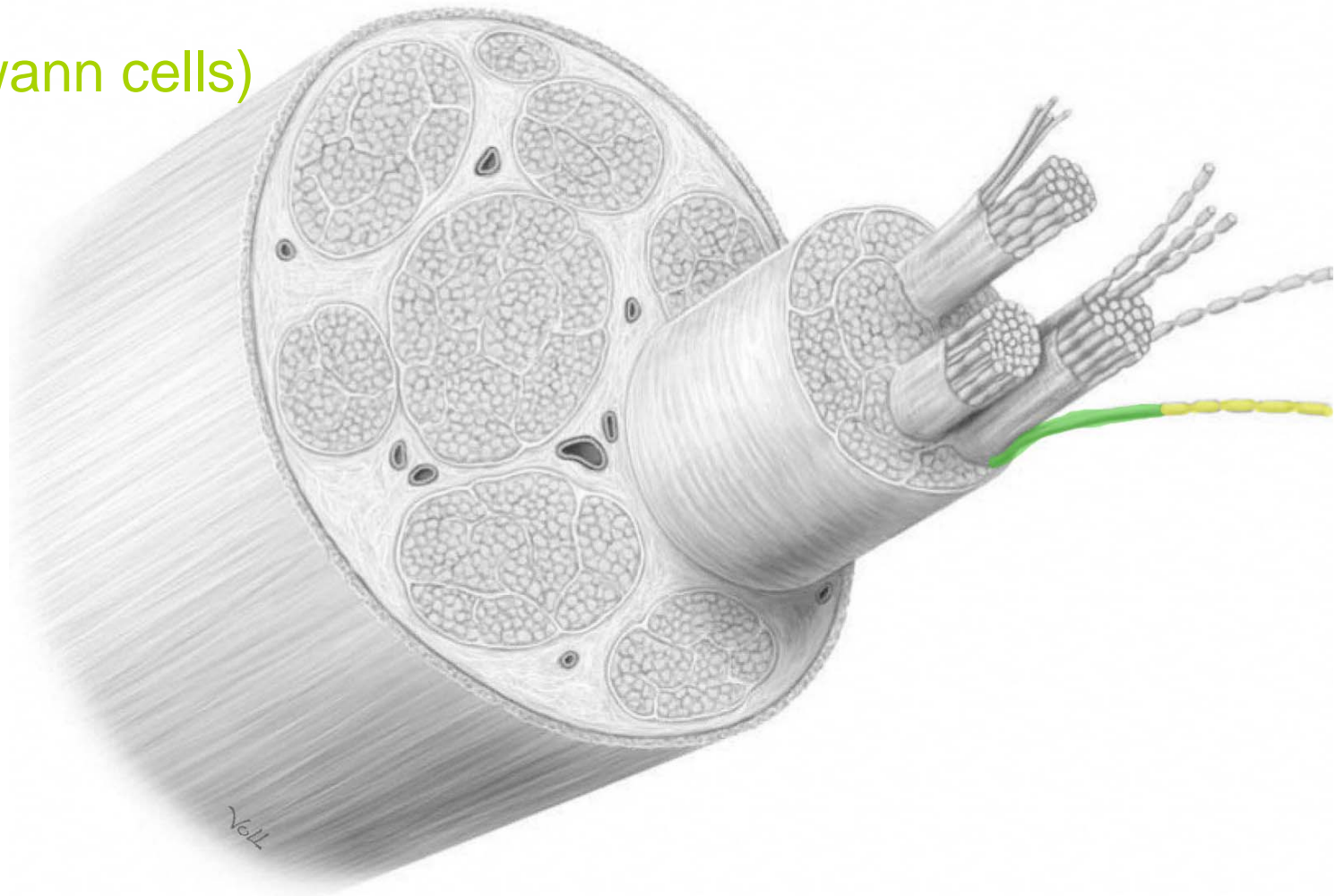


1) Intro to CN Modalities

- Neuron vs. Nerve

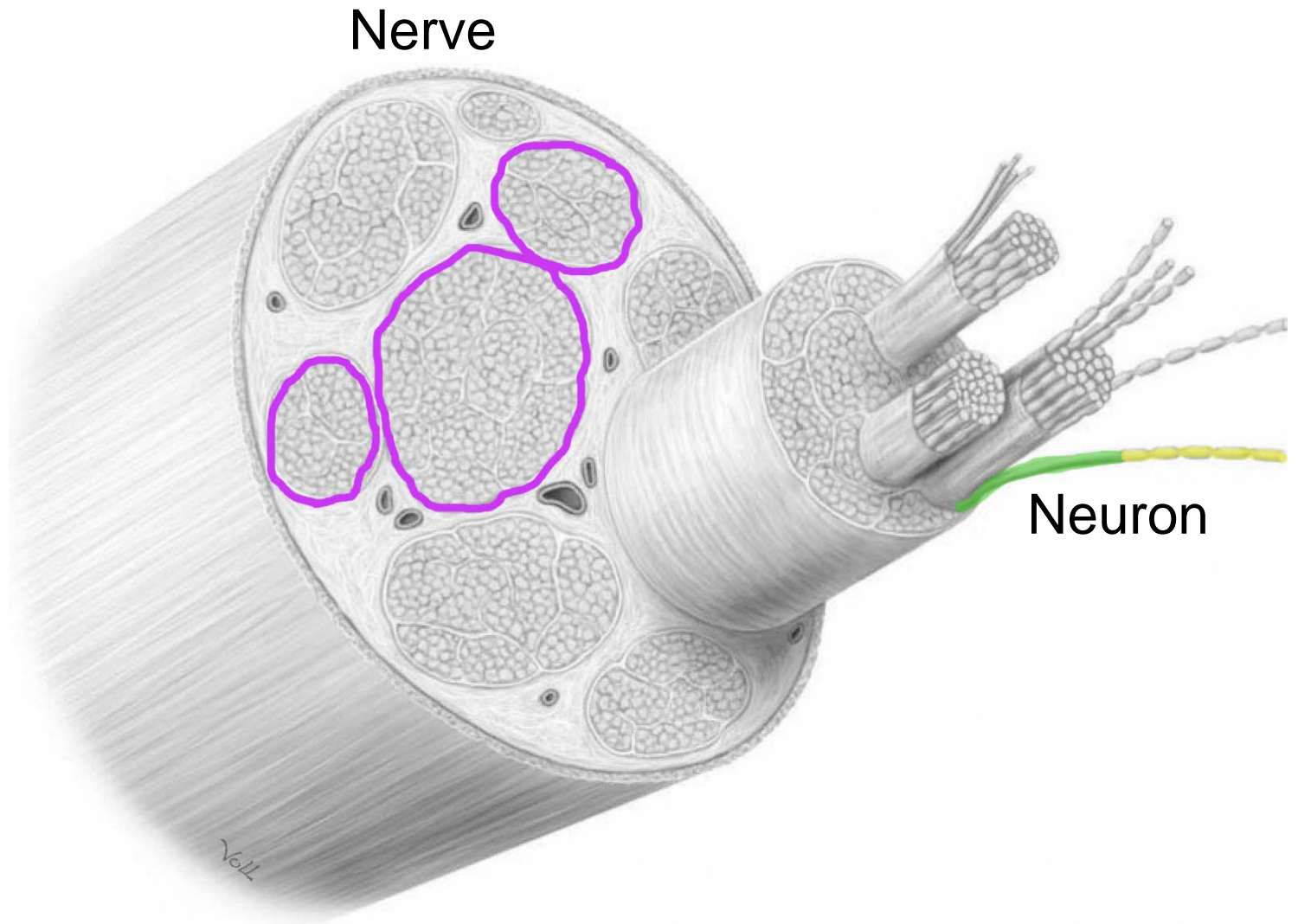
Endoneurium

(Schwann cells)

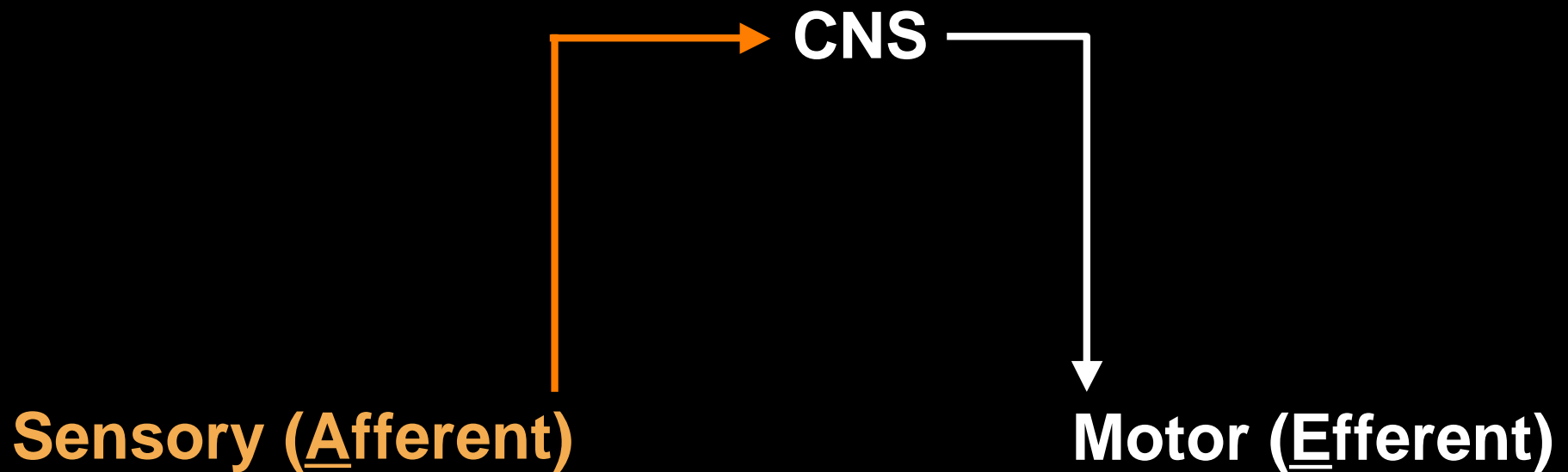


1) Intro to CN Modalities

- Neuron vs. Nerve



1) Intro to CN Modalities - **Sensory**



1) Intro to CN Modalities - Sensory

- touch
- smell
- sight
- hear
- taste



1) Intro to CN Modalities - Sensory

- touch – Gen. Sensory (GS) (CN V, VII, IX, X)
- smell
- sight
- hear
- taste

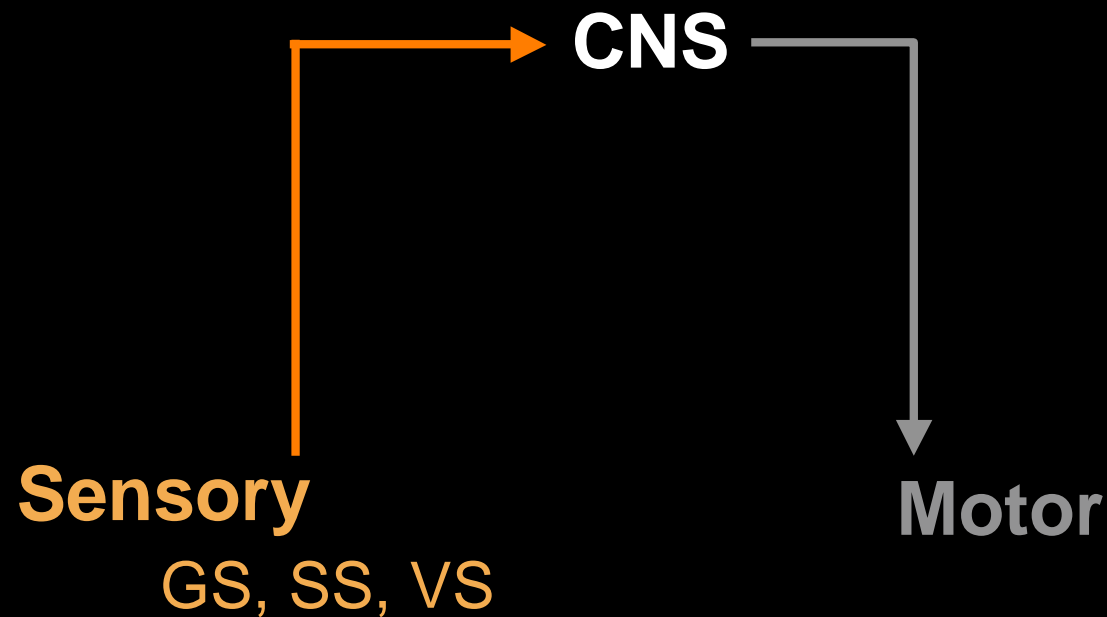
1) Intro to CN Modalities - Sensory

- touch – Gen. Sensory (GS) (CN V, VII, IX, X)
 - smell (CN I)
 - sight (CN II)
 - hear (CN VIII)
 - taste (CN VII, IX)
- } Special Sensory (SS)

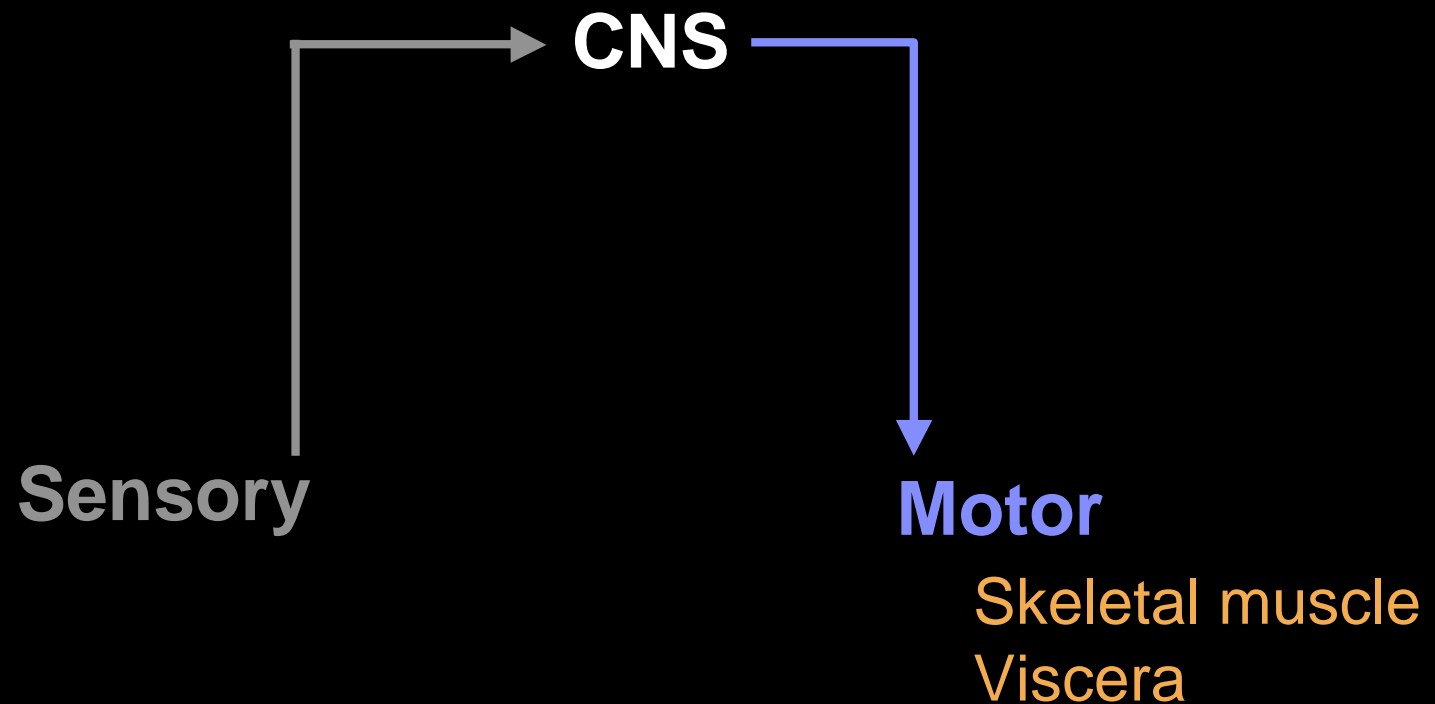
1) Intro to CN Modalities - Sensory

- touch – Gen. Sensory (GS) (CN V, VII, IX, X)
 - smell (CN I)
 - sight (CN II)
 - hear (CN VIII)
 - taste (CN VII, IX)
 - organ - Visc. Sensory (VS) (CN IX, X)
- } Special Sensory (SS)

1) Intro to CN Modalities - **Sensory**

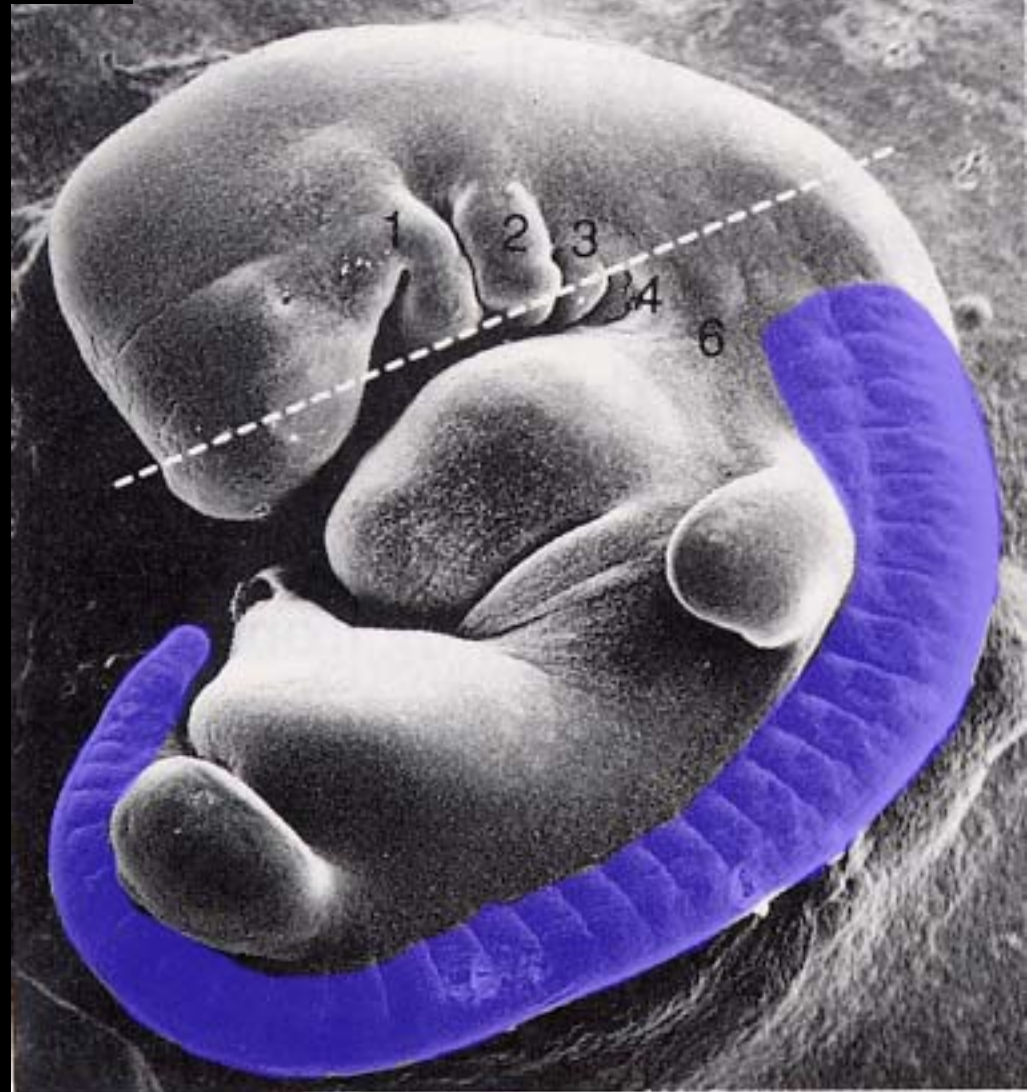


1) Intro to CN Modalities (Motor)



1) Intro to CN Modalities (Motor)

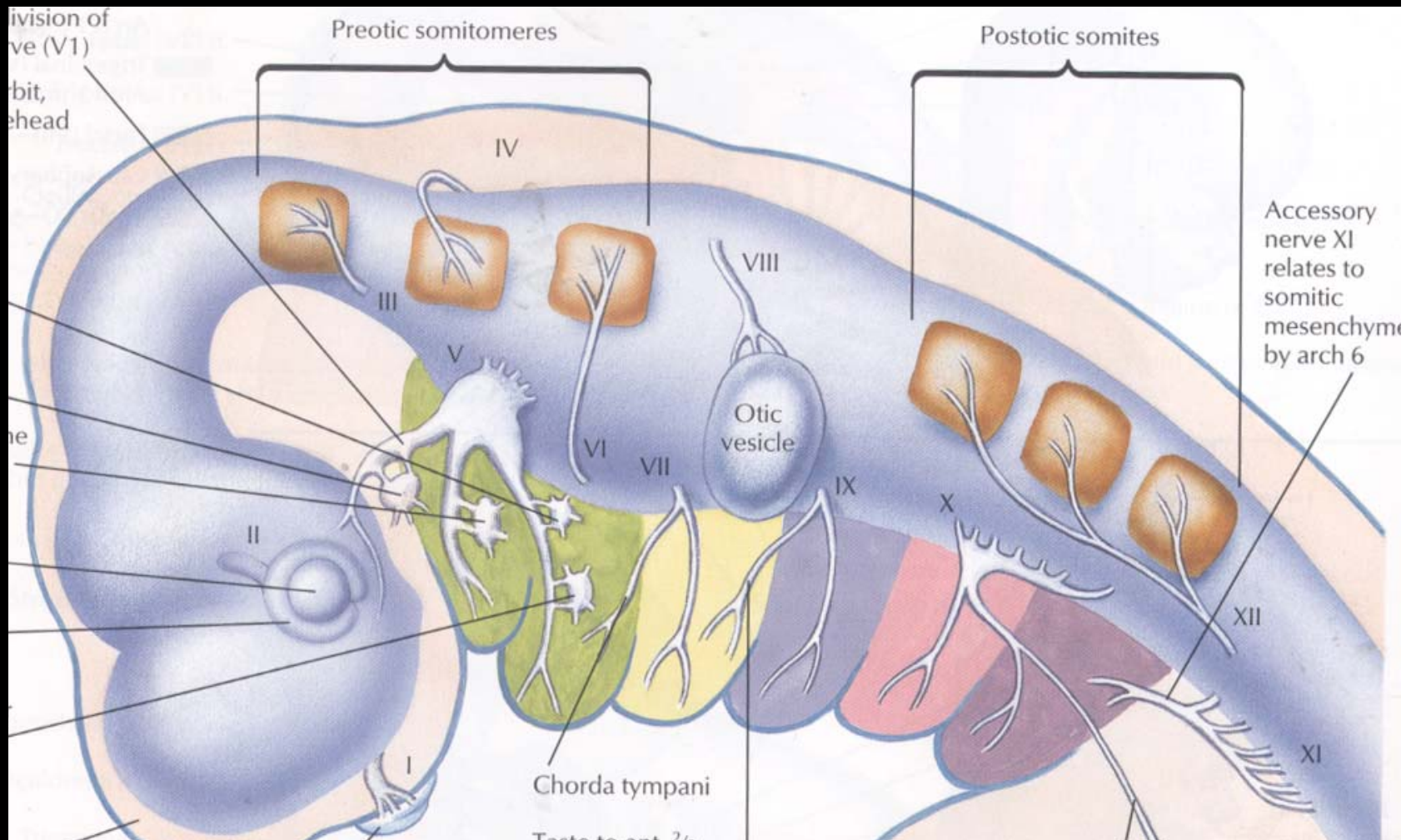
Somites = Somatic motor (SM)



31 Days

1) Intro to CN Modalities (Motor)

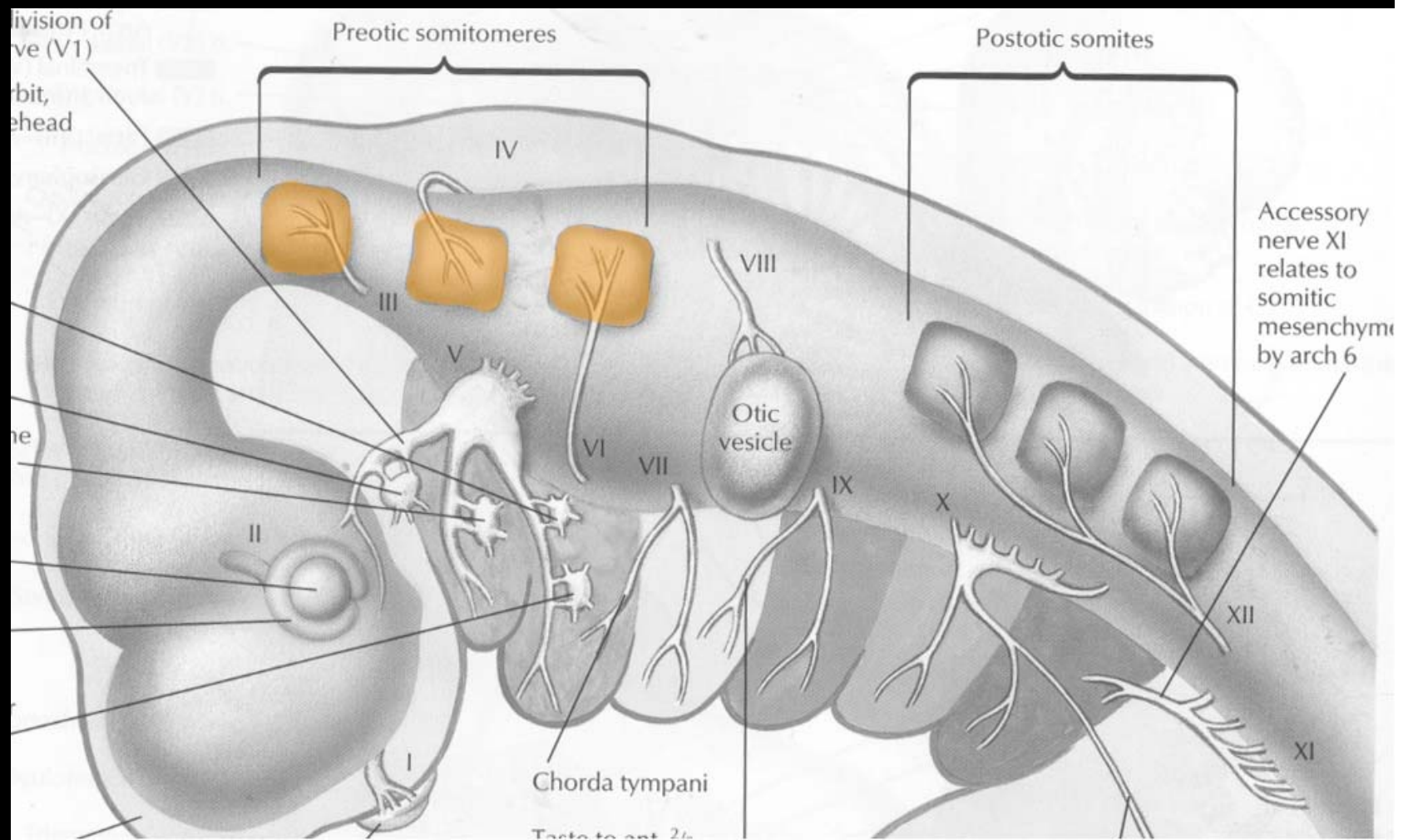
Preotic somites
Postotic somites



1) Intro to CN Modalities (Motor)

Preotic somites = Extraocular eye mm. (CN III, IV, VI)

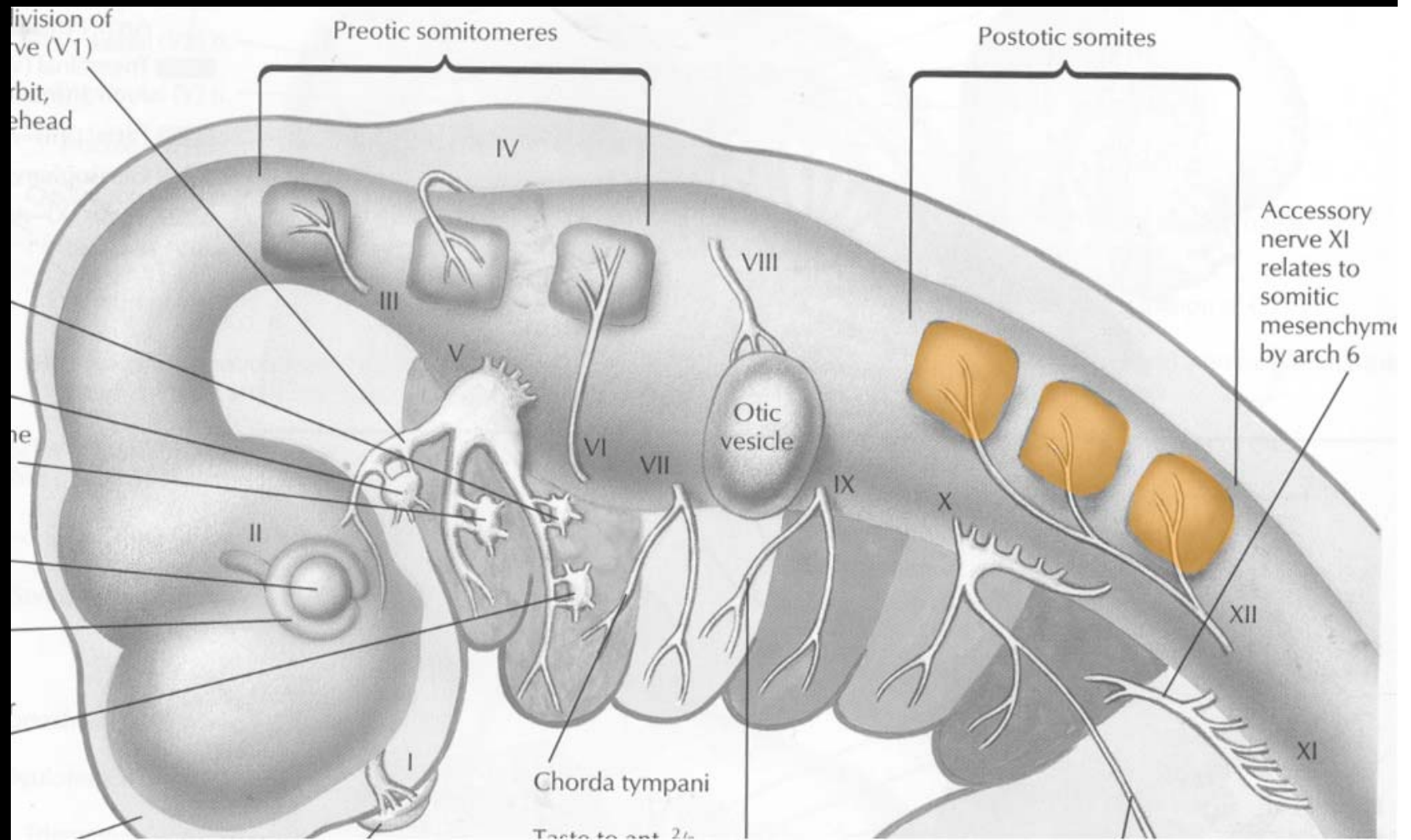
Postotic somites = Tongue mm. (CN XII)



1) Intro to CN Modalities (Motor)

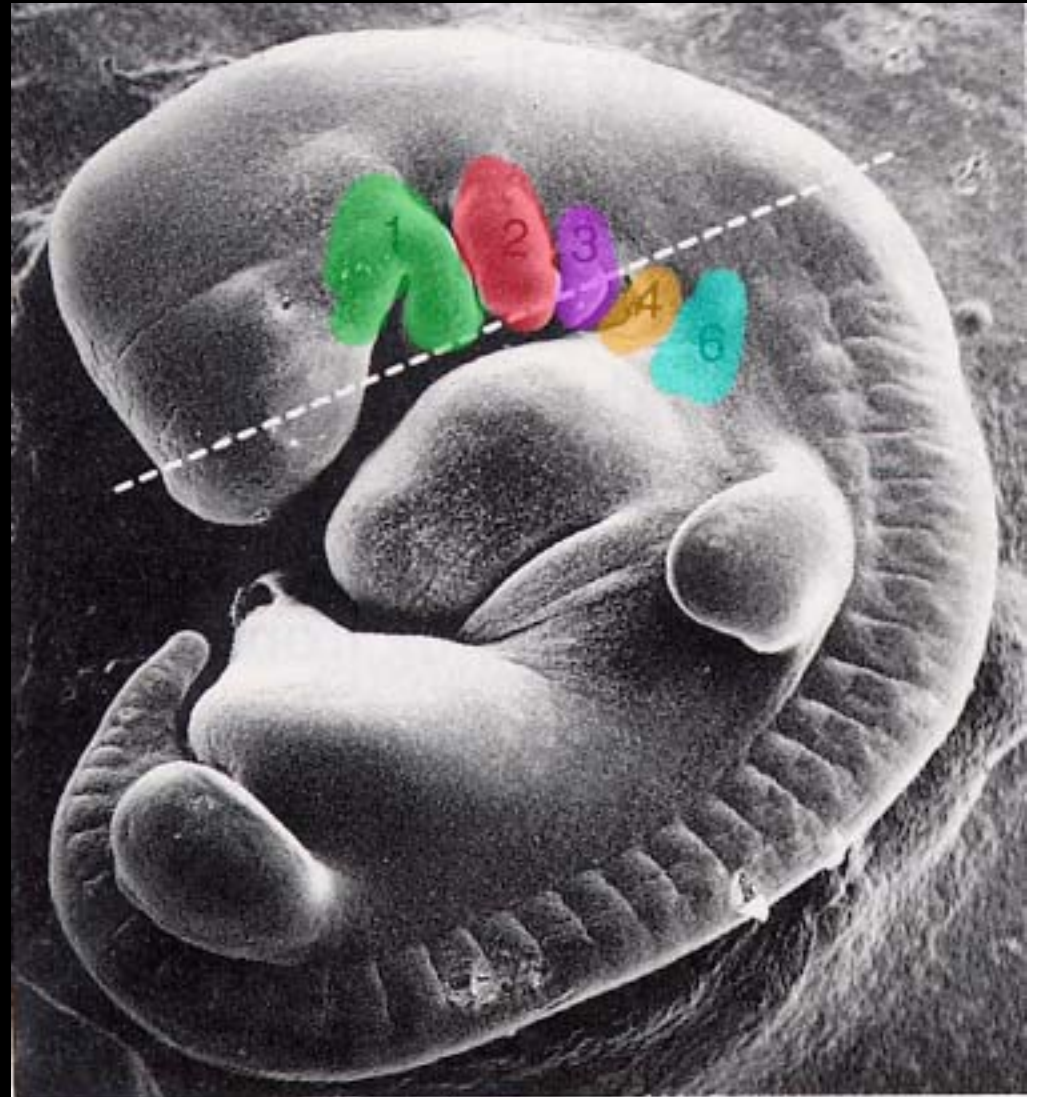
Preotic somites = Extraocular eye mm. (CN III, IV, VI)

Postotic somites = Tongue mm. (CN XII)



1) Intro to CN Modalities (Motor)

Branchial arches = Branchial Motor (BM)



31 Days

1) Intro to CN Modalities (Motor)

Branchial arches = Branchial Motor (BM)

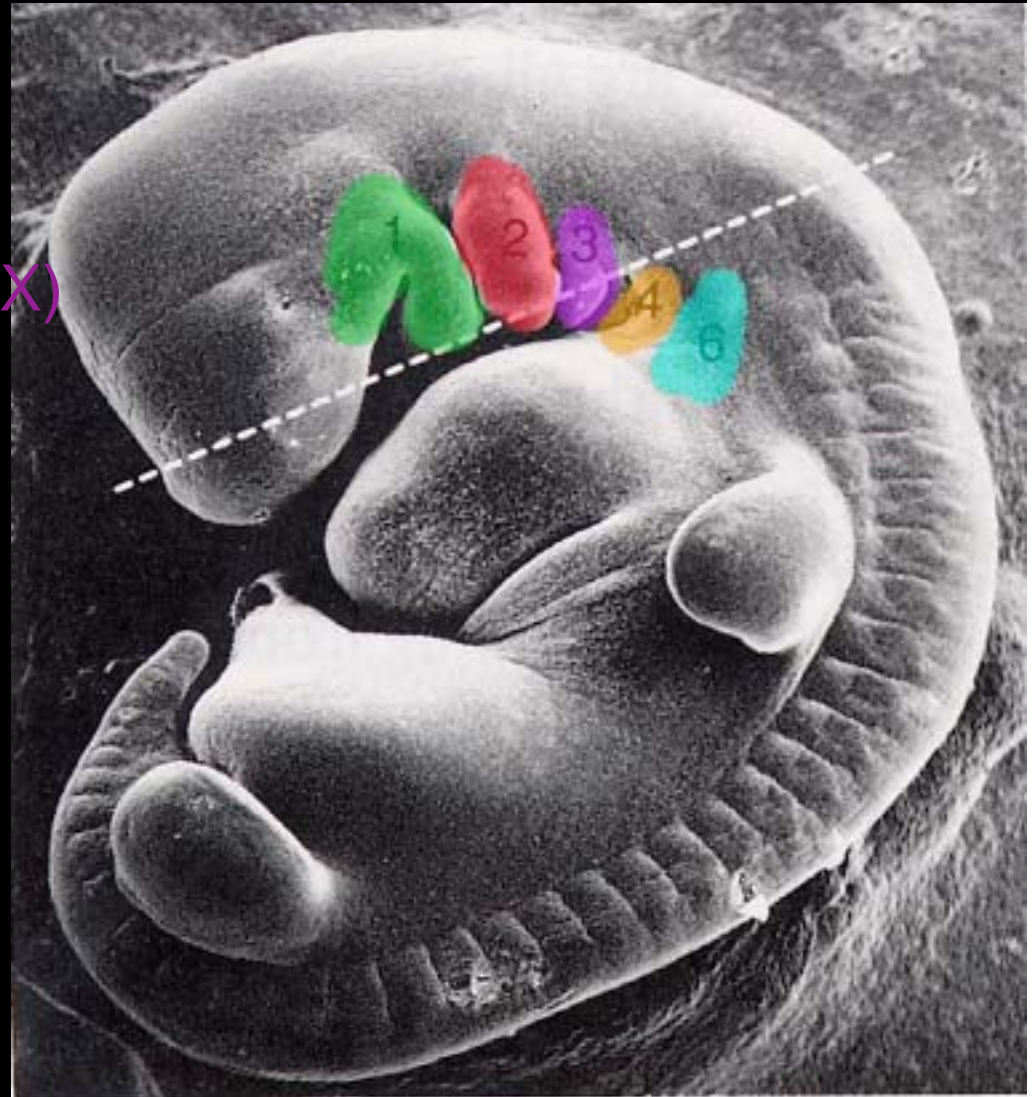
1: Trigeminal n. (CN V)

2: Facial n. (CN VII)

3: Glossopharyngeal n. (CN IX)

4 and 6: Vagus n. (CN X)

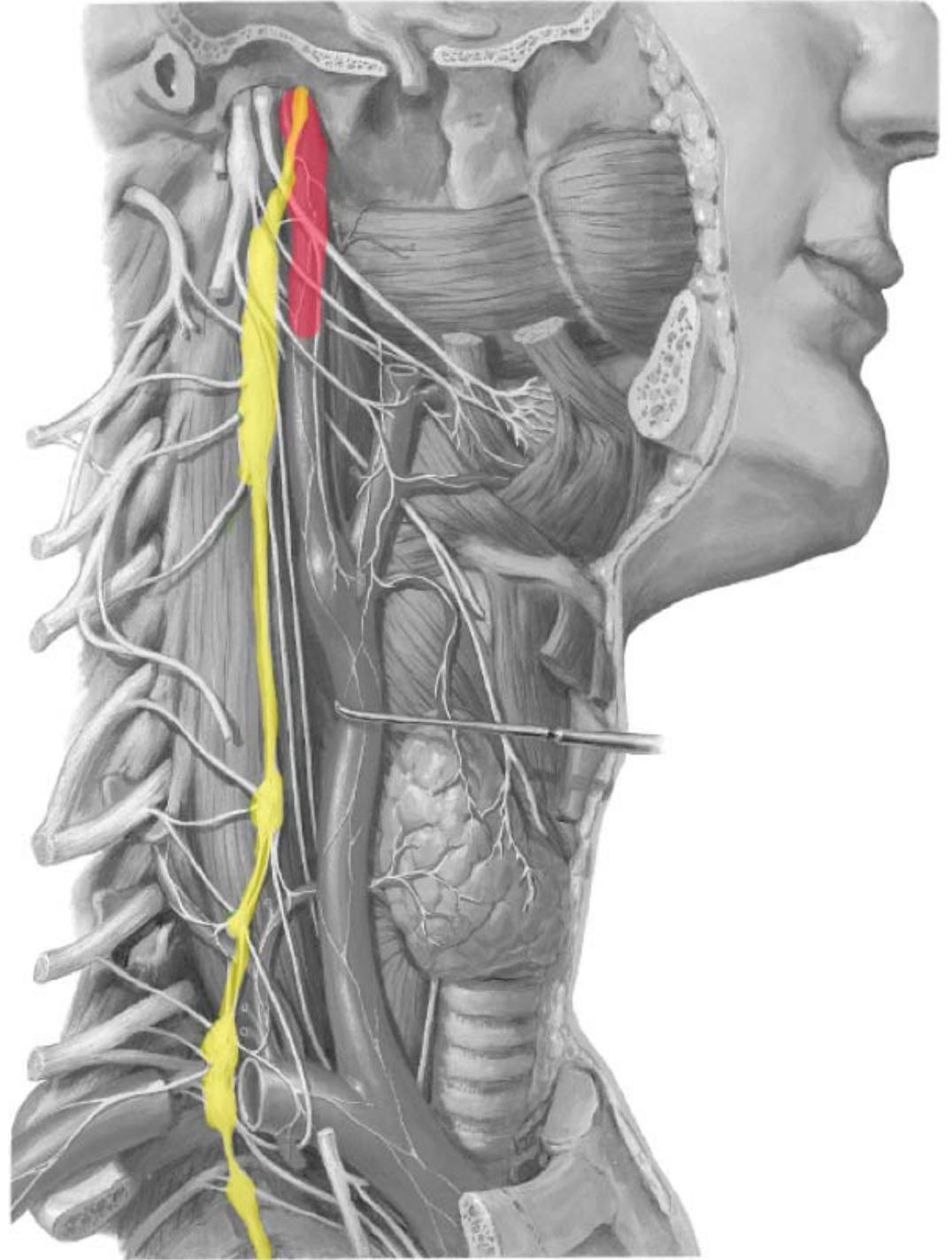
?: Sp. Accessory (CN XI)



31 Days

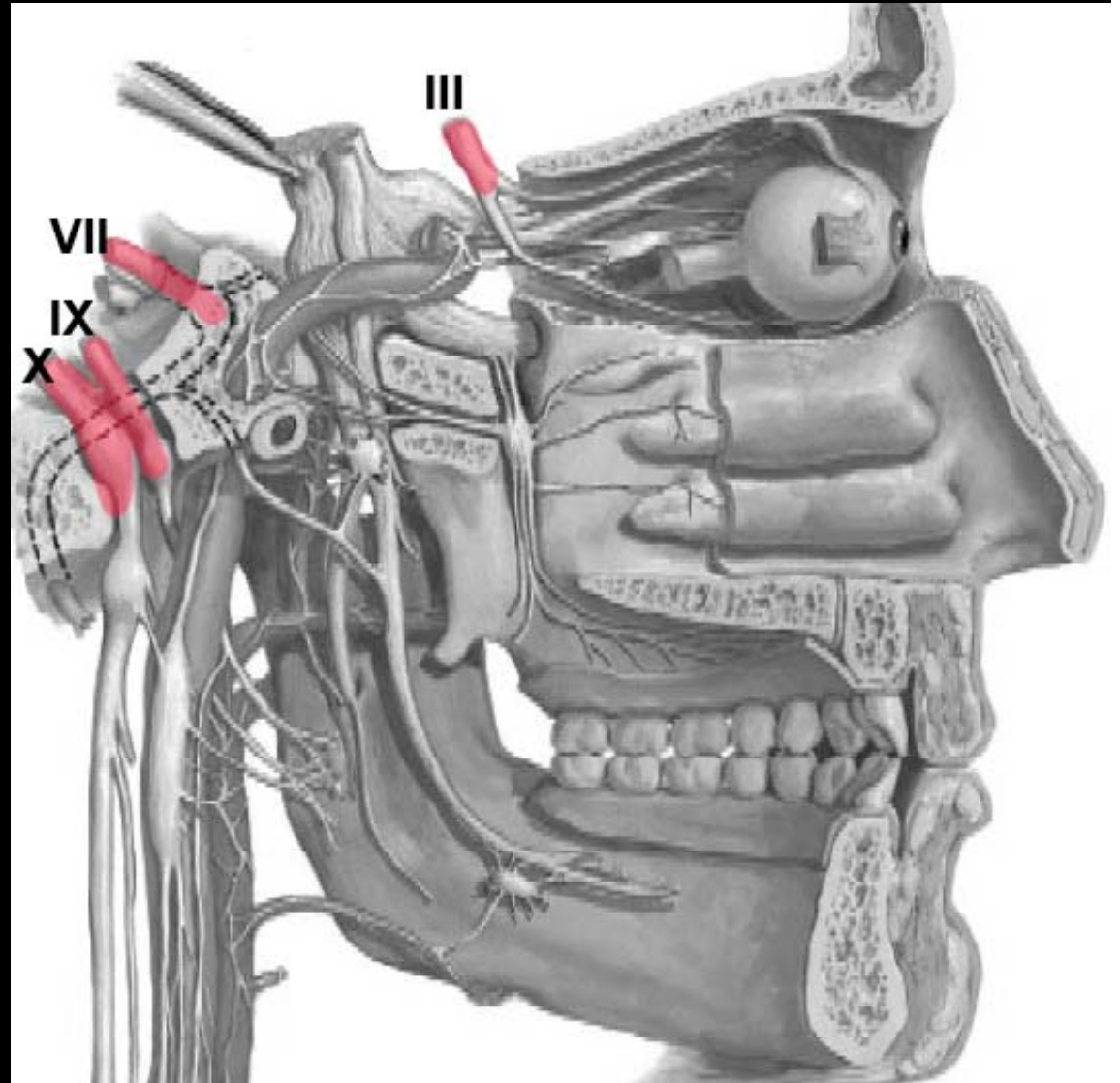
3) Autonomics

Sympathetics



3) Autonomics

Parasympathetics

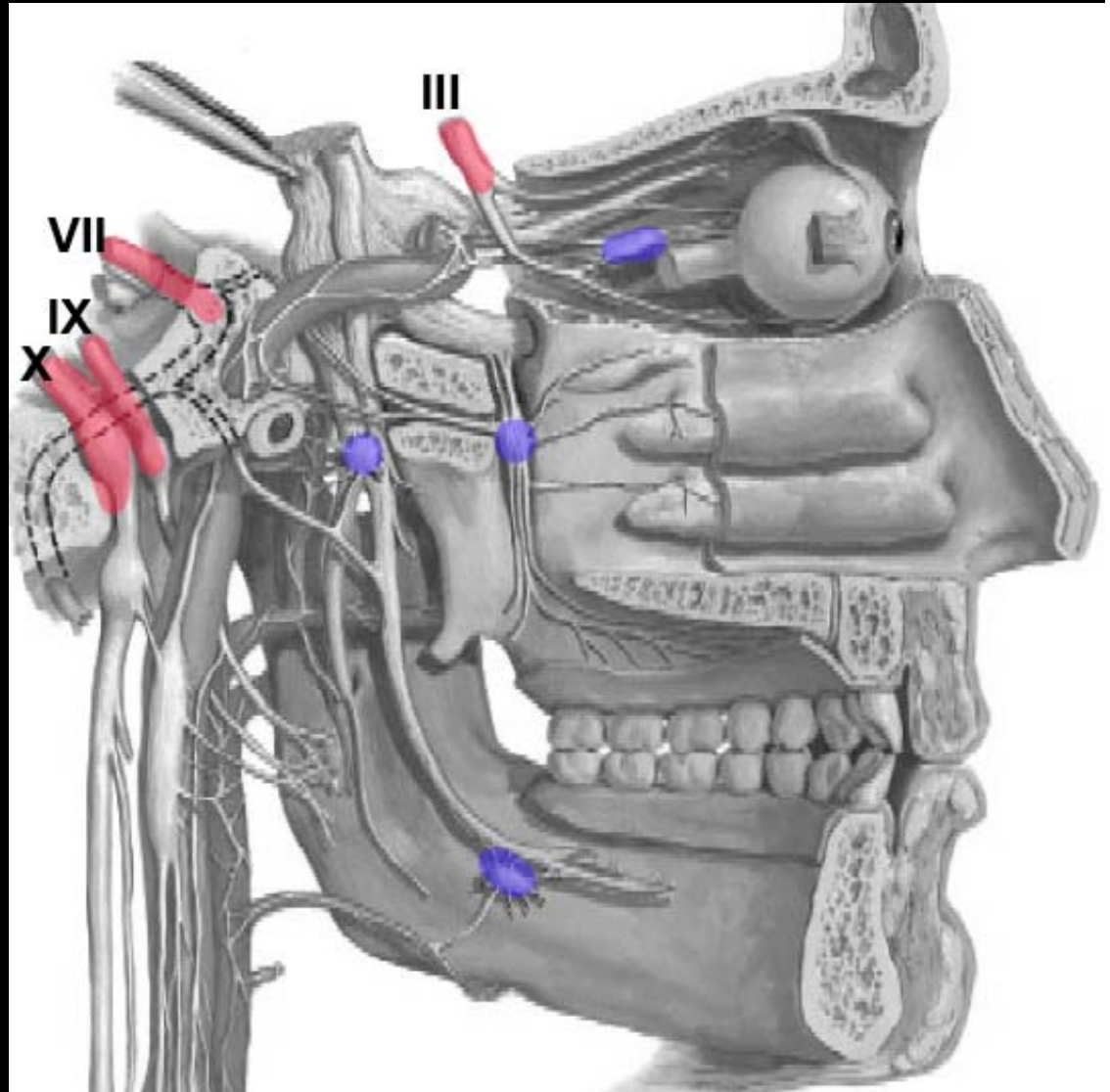


3) Autonomics

Parasympathetics

Parasymp ganglia:

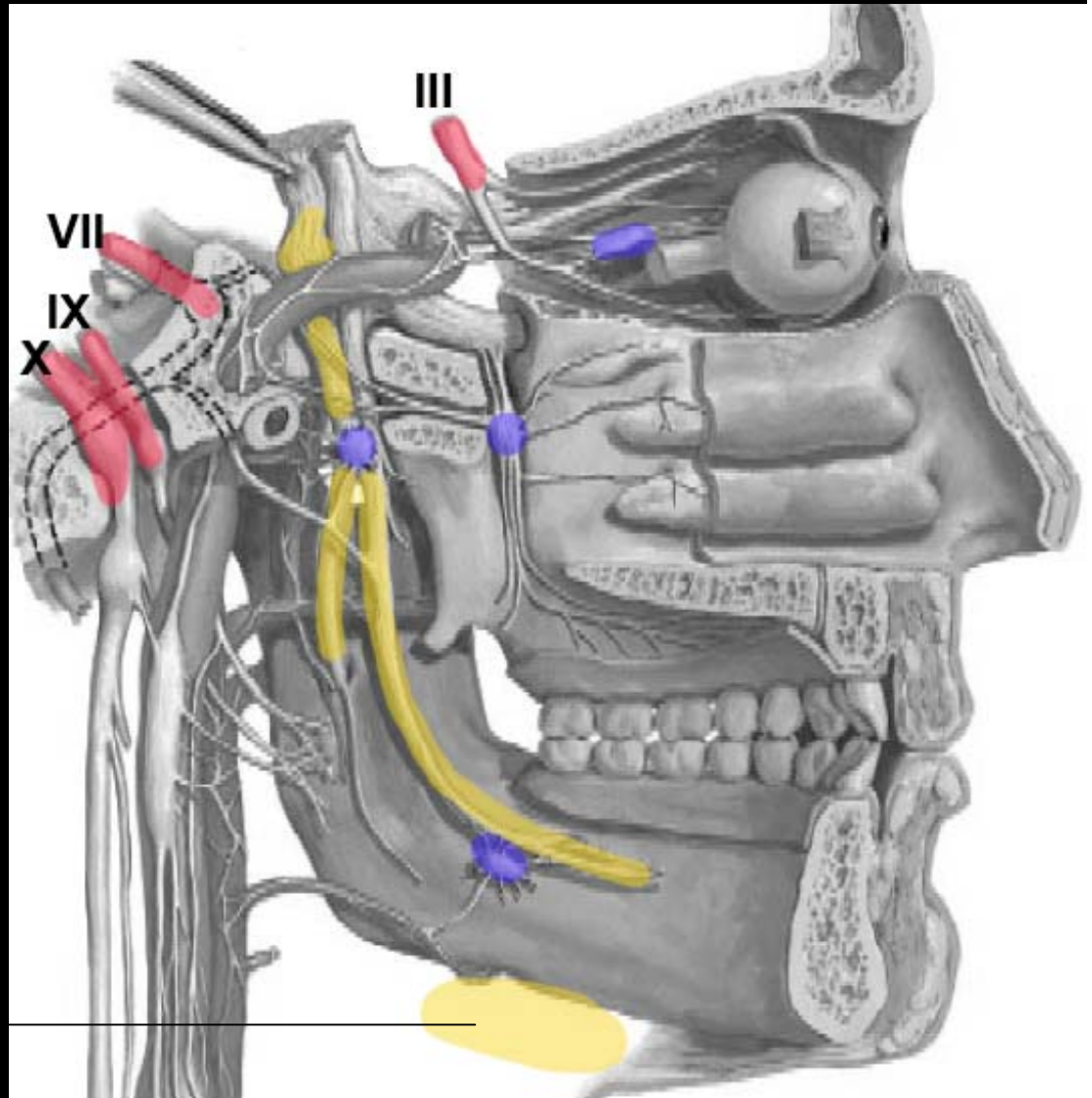
- Ciliary
- Pterygopalatine
- Otic
- Submandibular



3) Autonomics

Parasympathetics

CN V

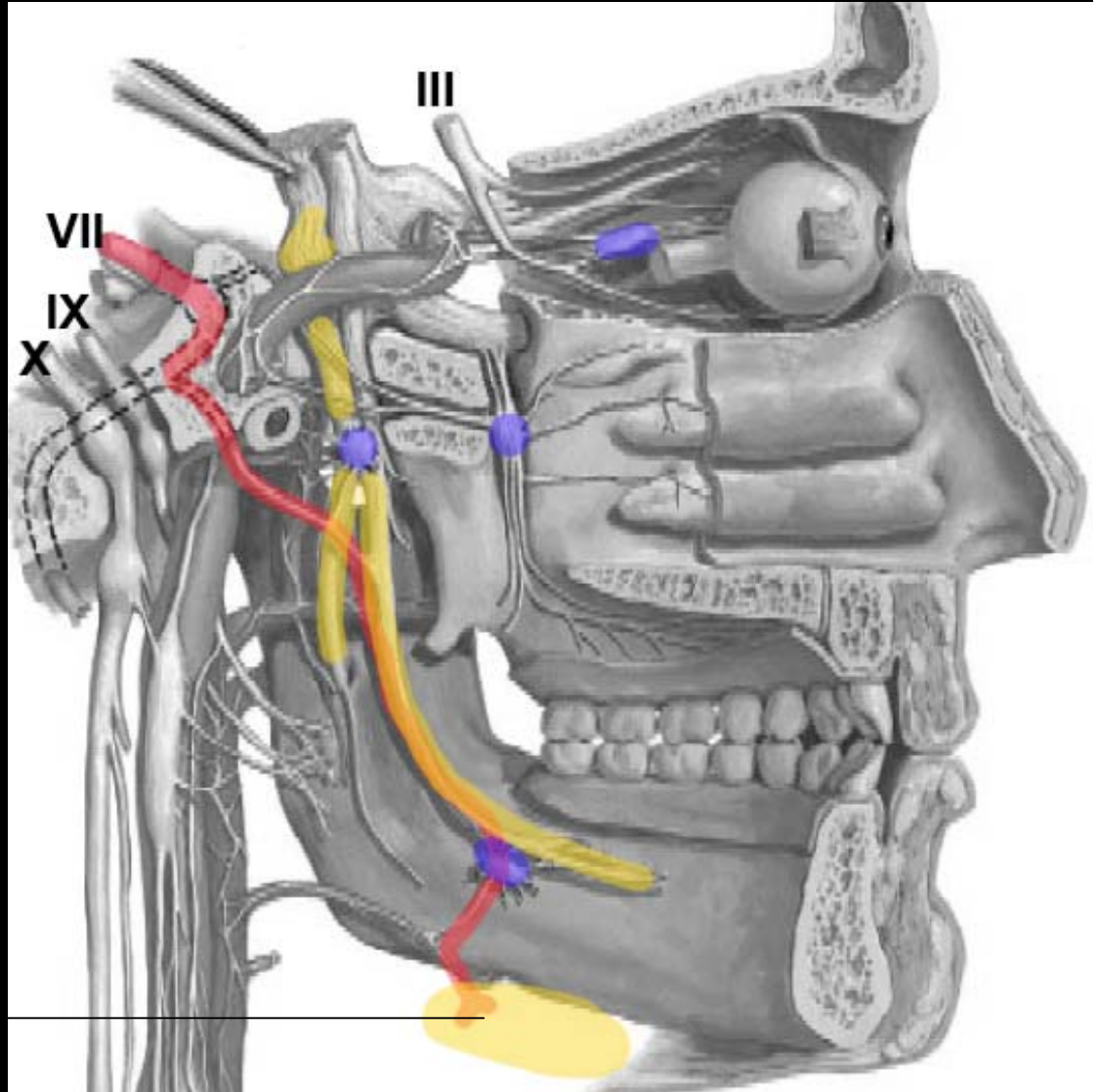


Submand gland

3) Autonomics

Parasympathetics

CN VII hitch-hikes
on CN V



Question

Dr. Morton ... What do we need to know for the exam?

THANK-YOU